

# FTE Jerez

Flight Training Europe

FLY. TRAIN. EXCEL.



A320  
TYPE RATING



Over 30 years of experience

## FTEJerez TYPE RATINGS

With over 30 years at the forefront of flight training in Europe and more than 2,000 graduated pilots who now fly for the world's leading airlines, FTEJerez has established itself as one of the leading and most exclusive flight training organisations, specialising in ab initio ATPL training programmes for aspiring pilots and airline cadets alike.

FTEJerez has significant experience in multi-crew training, having delivered APS MCC and MPL integrated courses, to hundreds of customers, including phase 4 (type rating) to a number of them. Our carefully selected and standardised team of airline training captains have thousands of hours of experience flying and training pilots for Europe's leading airlines.



RAISING YOUR PILOT EXPERTISE

A320 Type Rating Courses

# TRAINING PROGRAMMES

FTEJerez offers standalone **A320 Type Rating Courses** as part of its portfolio of quality training services. Complemented by an array of additional courses tailored for both airline pilots and corporate clients, our commitment to training excellence remains unwavering.

Embark on your journey with us, as our **A320 Type Rating Course** kicks off on our cutting-edge **Airbus A320 MPS FTD 1 fixed base device**, located at our campus in **Jerez de la Frontera**. On-site accommodation is also available\*.

The final stages of your type rating will be conducted, utilising cutting-edge Airbus Full Flight Simulators, property of **AFG Aeronautical Training Centre**, conveniently situated near the **Madrid Barajas International Airport**.

*\* Quote on request.*










FOCUSED ON TRAINING EXCELLENCE

A320 Type Rating

# TRAINING PROGRAMME

Our standard **A320 Type Rating Course** follows the following course programme:

-  Ground School
-  FTD Sessions
-  FFS Sessions

DAY 1	DAY 2	DAY 3	DAY 4
Crew Registration. <b>CBT + FTD 1</b> [ 2+2 = 4 hours ]	<b>CBT + FTD 2</b> [ 2+2 = 4 hours ]	<b>CBT + FTD 3</b> [ 2+2 = 4 hours ]	<b>Performance</b>
DAY 5	DAY 6	DAY 7	DAY 8
<b>FTD 4</b> [ 1PM + 1PF ]	<b>FTD 5</b> [ 1PM + 1PF ]	<b>FTD 6. Progress Test</b> [ 1PM + 1PF ]	<b>FTD 7</b> [ 1PM + 1PF ]
DAY 9	DAY 10	DAY 11	DAY 12
<b>FTD 8</b> [ 1PM + 1PF ]	<b>FTD 9</b> [ 1PM + 1PF ]	<b>FTD 10</b> [ 1PM + 1PF ]	<b>FTD 11</b> [ 1PM + 1PF ]
DAY 13	DAY 14	...	
<b>FTD 12</b> [ 1PM + 1PF ]	<b>Performance Exam. System Exam.</b>		

- Ground School
- FTD Sessions
- FFS Sessions

...		<b>DAY 15</b>	<b>DAY 16</b>
		<b>FTD 13</b> [ 2PM + 2PF ]	<b>FTD 14</b> [ 2PM + 2PF ]
<b>DAY 17</b>	<b>DAY 18</b>	<b>DAY 19</b>	<b>DAY 20</b>
<b>FTD 15</b> [ 2PM + 2PF ]	<b>FTD 16</b> [ 2PM + 2PF ]	<b>FTD 17</b> [ 2PM + 2PF ]	<b>FTD 18</b> [ 2PM + 2PF ]
<b>DAY 21</b>	<b>DAY 22</b>	<b>DAY 23</b>	<b>DAY 24</b>
<b>FTD 19</b> [ 2PM + 2PF ]	<b>FSS 1</b> [ 2PM + 2PF ]	<b>FSS 2</b> [ 2PM + 2PF ]	<b>FSS 3</b> [ 2PM + 2PF ]
<b>DAY 25</b>	<b>DAY 26</b>	<b>DAY 27</b>	
<b>FFS 4. LOFT</b> [ 2PM + 2PF ]	<b>FFS 5. Licence Skill Test</b> [ 2 hours ]	<b>FFS 6. Low Visibility Ops</b> [ 2PM + 2PF ]	

A320 Type Rating Courses

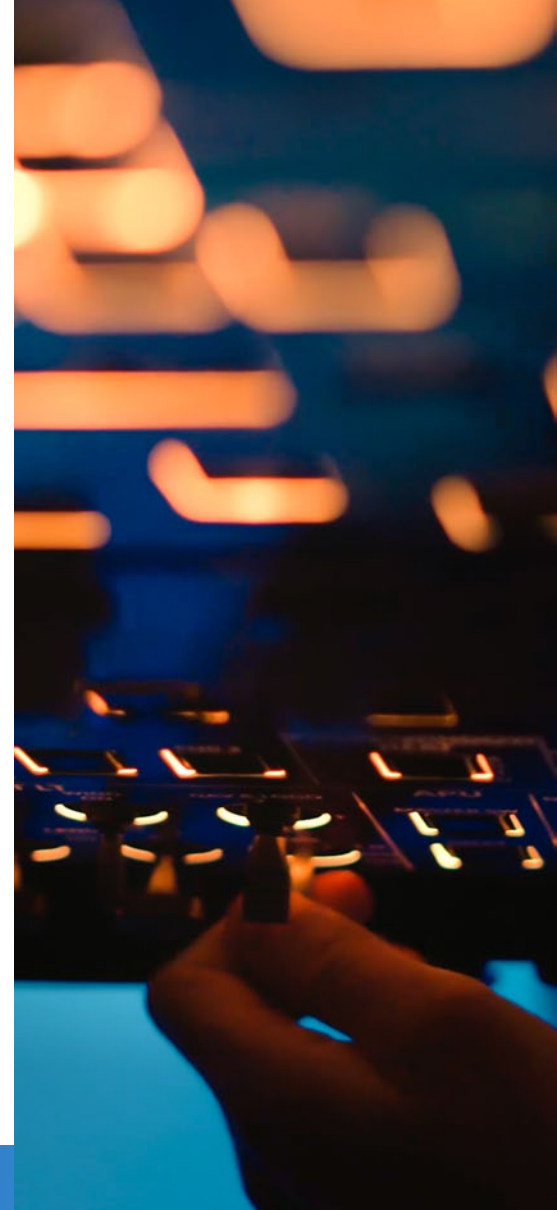
# EASA AIRBUS A-320

Below, we present the course structure in terms of training hours and location of our EASA approved training.

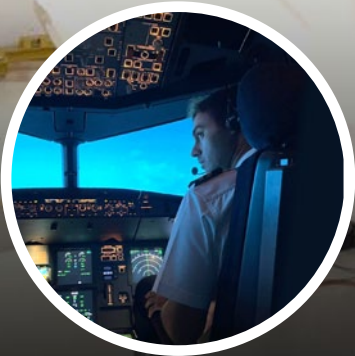
Training Syllabus (per Student)	Location
<u>24 hours APT (A-320) training*</u>	<u>FTE Campus, Jerez.</u>
<u>28 hours FSTD (A-320) training</u>	<u>FTE Campus, Jerez.</u>
24 hours FFS (A-320) training	AFG, Madrid.



*\* These hours may, alternatively, be delivered in an FSTD (A-320)*







“ Choosing FTEJerez for my A320 Type Rating was the best decision. The training was spot-on, allowing me to perform to the highest standards during my line training. From the cutting-edge facilities to the experienced instructors who are currently flying with the airlines, every aspect was top-notch. FTEJerez isn't just a school; it's the launchpad that propelled me into a successful aviation career. ”

**Antonio Real O'Neill**  
*A320 First Officer*



# FTEJerez

Flight Training Europe

Aeropuerto de Jerez de la Frontera  
Base Aérea La Parra  
Jerez de la Frontera 11401 Cádiz, Spain  
Tel. +34 956 317 800  
Email: [info@ftejerez.com](mailto:info@ftejerez.com)

[www.ftejerez.com](http://www.ftejerez.com)

[www.facebook.com/ftejerez](http://www.facebook.com/ftejerez) 

[www.instagram.com/ftejerez](http://www.instagram.com/ftejerez) 